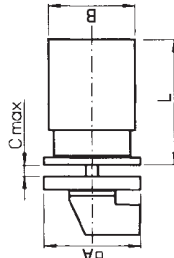


# DIMENSIONS M.M.

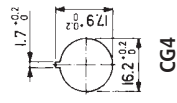
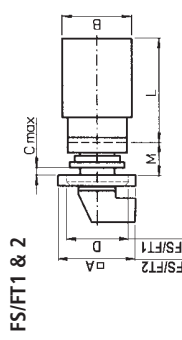
## Rotary Cam Switches

### 4 hole mounting – type E

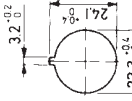
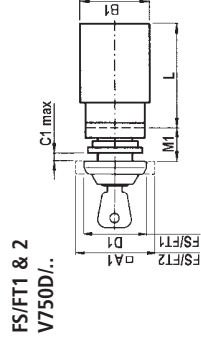


	A	B	C	D1	D2	E	M
CG4	30	28	4	3.2	8-11	-	6.7
CH10	48	46	4	5	8-15	36	6.7
CA10	48	43	4	5	8-15	36	6.7
CA20	48	45	4	5	8-15	36	6.7
CA25	48	46	4	5	8-15	36	6.7

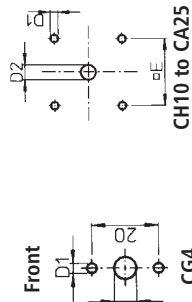
### Single hole mount - type FT/FS1 & FT/FS 2



CG4 – CA25

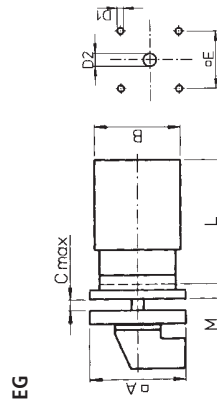


	A	B	C	D	M
CG4	30	28	5	29.5	12.5
CH10	49	46	6	39	18.2
CA10	49	43	6	39	18.2
CA20	49	45	6	39	18.2
CA25	49	46	6	39	18.2
A1	B1	C1	D1	M1	
CG4	29.5	28	5.5	29.5	12.5
CH10	49	46	6	39	18.2
CA10	49	43	6	39	18.2
CA20	49	45	6	39	18.2
CA25	49	46	6	39	18.2

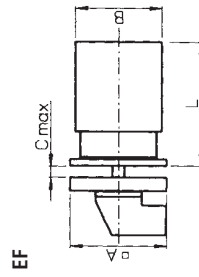


'L' Dimension	CG4		CH10	CA10	CA20	CA25
	1	38.5	43.5	43.5	33.5	37.7
2	50.5	57.5	57.5	43	50.4	53
3	62.5	71.5	71.5	52.5	63.1	67
4	74.5	85.5	85.5	62	75.8	81
5	86.5	99.5	99.5	71.5	88.5	95
6	98.5	113.5	113.5	81	101.2	109
7	110.5	127.5	127.5	90.5	113.9	123
8	122.5	141.5	141.5	100	126.6	137
9	-	155.5	155.5	109.5	139.3	151
10	-	169.5	169.5	119	152	165
11	-	183.5	183.5	128.5	164.7	179
12	-	197.5	197.5	138	177.4	193

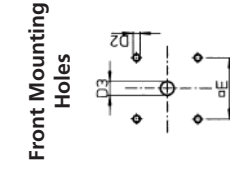
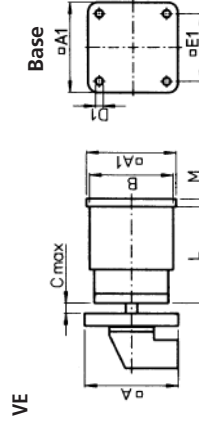
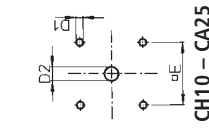
### Options



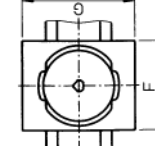
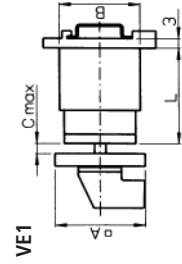
	A	B	C	D1	D2	E	M
CH10	64	46	4	5	10-15	48	6.7
CA10	64	43	4	5	10-15	48	6.7
CA20	64	45	4	5	10-15	48	6.7
CA25	64	46	4	5	10-15	48	6.7



	A	B	C	D1	D2	E
CG4	30	28	4	3.2	8-11	-
CH10	48	46	4	5	15-19	36
CA10	48	43	4	5	15-19	36
CA20	48	45	4	5	15-19	36
CA25	48	46	4	5	15-19	36



	A	A1	B	C	D1	D2
CH10	48	64	46	10.5	4.1	5
CA10	48	48	43	10.5	4.1	5
CA20	48	48	45	10.5	4.1	5
CA25	48	64	46	10.5	4.1	5
D3	E	E1	F	G	M	
CH10	8-15	36	48	48	60	5.2
CA10	8-15	36	36	48	60	2.2
CA20	8-15	36	36	48	60	2.2
CA25	8-15	36	48	48	60	3.2



	CA10	CA10	CA10
	1&2 stage	3&4 stage	5&6 stage
Dim L2	53.5	67.5	81.5